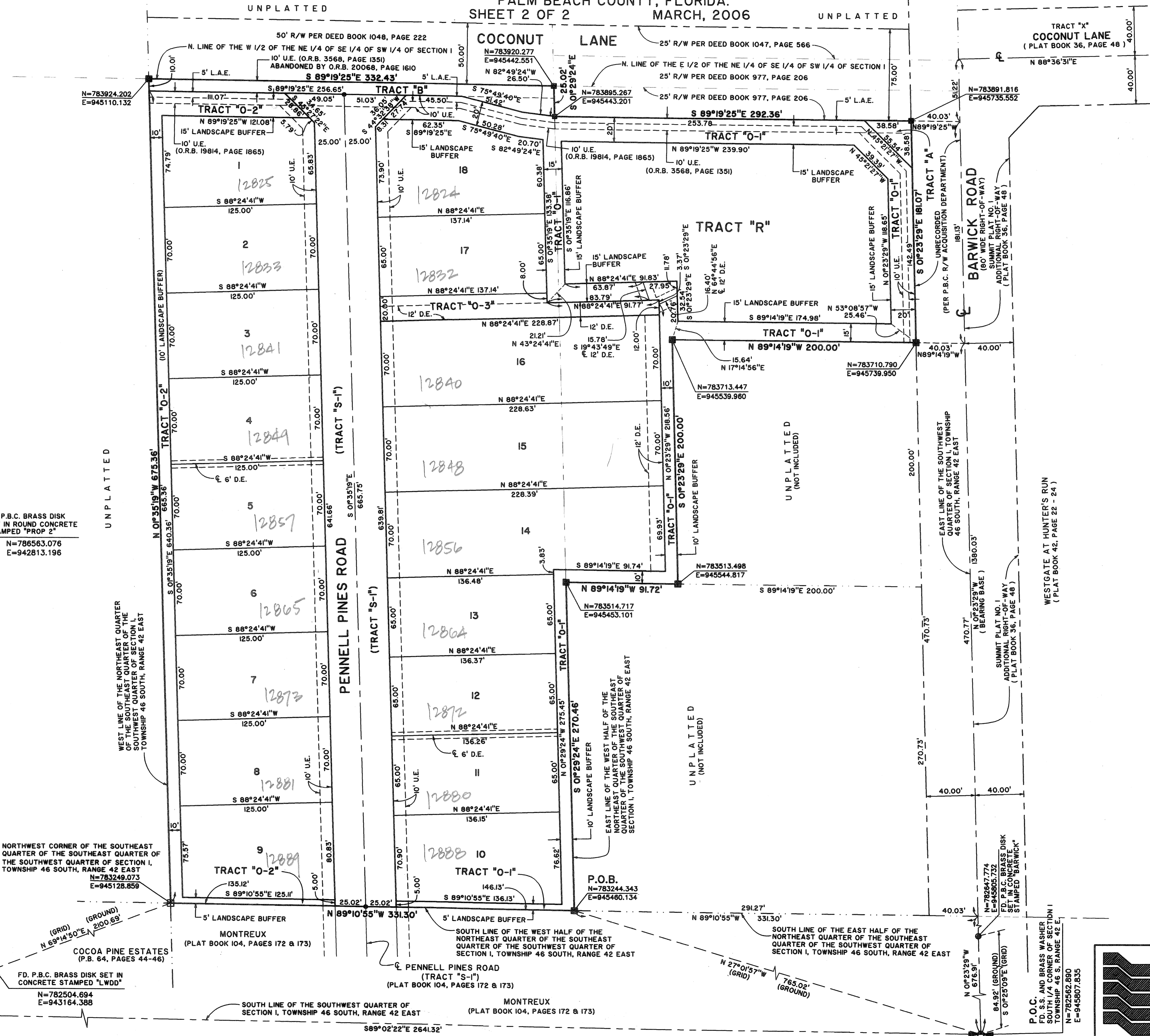


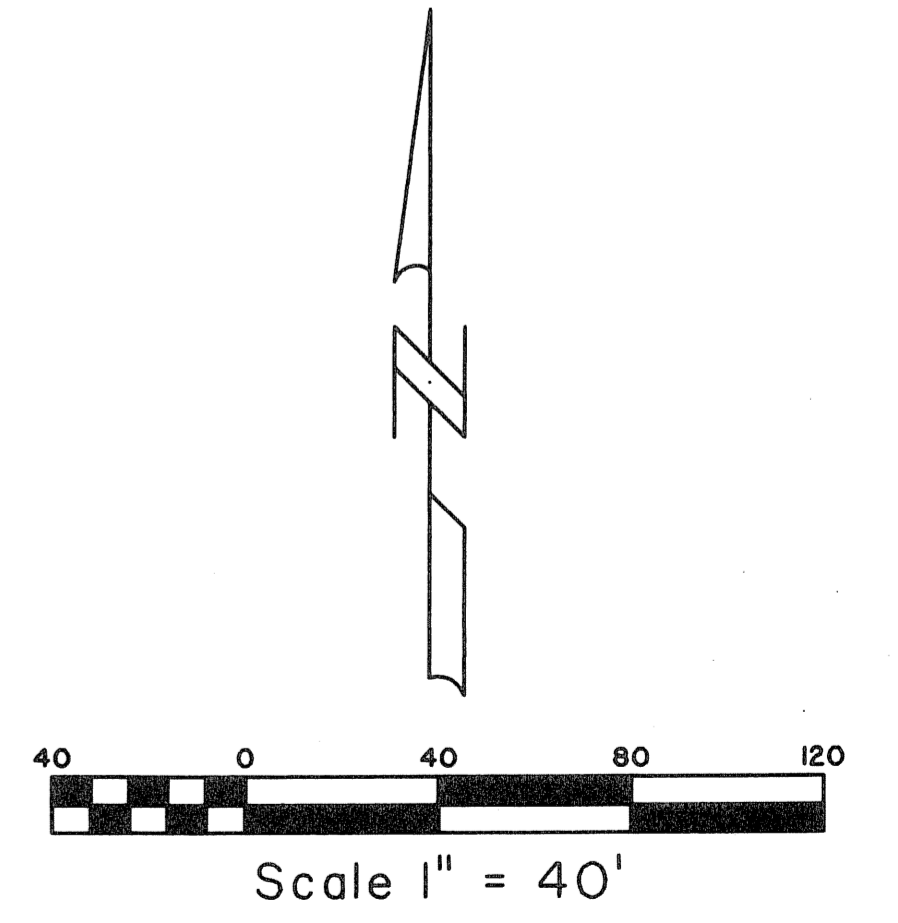
MONTREUX II

(FORMERLY KNOWN AS COCONUT LANE PROPERTY)
 LYING IN SECTION I, TOWNSHIP 46 SOUTH, RANGE 42 EAST,
 PALM BEACH COUNTY, FLORIDA.
 SHEET 2 OF 2 MARCH, 2006



STATE OF FLORIDA SS
 COUNTY OF PALM BEACH
 THIS PLAT WAS FILED FOR RECORD AT
 ___ M., THIS ___ DAY OF ___ 2006
 AND DULY RECORDED IN PLAT BOOK NO. ___
 ON PAGE ___
 SHARON R. BOCK
 CLERK AND COMPTROLLER
 BY _____ D.C.

COORDINATE NOTE:
 STATE PLANE COORDINATES SHOWN ARE GRID DATUM, NAD 83 1990
 ADJUSTMENT, FLORIDA EAST ZONE, COORDINATE SYSTEM 1983 STATE
 PLANE, TRANSVERSE MERCATOR PROJECTION
 LINEAR UNIT = US SURVEY FEET
 ALL DISTANCES ARE GROUND
 SCALE FACTOR = 1.0000371
 GROUND DISTANCE X SCALE FACTOR = GRID DISTANCE
 BEARINGS AS SHOWN HEREON ARE GRID DATUM, NAD 83 1990
 ADJUSTMENT, FLORIDA EAST ZONE.



SUBDIVISION Montreux II
 BOOK 108 PAGE 15
 FLOOD ZONE B
 ZONING RT
 QUAD # 26
 SE
 TAZ 512
 PUB NAME

SOUTHWEST CORNER OF SECTION I, TOWNSHIP 46 SOUTH, RANGE 42 EAST
 N=782504.694
 E=943164.388

NORTHWEST CORNER OF THE SOUTHWEST QUARTER OF THE SOUTHWEST QUARTER OF SECTION I, TOWNSHIP 46 SOUTH, RANGE 42 EAST
 N=783249.073
 E=945128.859

FD. P.B.C. BRASS DISK SET IN ROUND CONCRETE STAMPED "PROP 2"
 N=786563.076
 E=942813.196

P.O.B.
 N=783244.343
 E=945460.134

FD. P.B.C. BRASS DISK SET IN ROUND CONCRETE STAMPED "PROP 1"
 N=782647.774
 E=945805.732

P.O.C.
 FD. S.S. AND BRASS WASHER SOUTH 1/4 CORNER OF SECTION I, TOWNSHIP 46 S. RANGE 42 E.
 N=782562.890
 E=945807.835

Landmark Surveying & Mapping Inc.
 1850 Forest Hill Boulevard
 Ph. (561) 433-5405 Suite 100 W.P.B. Florida
 LB # 4396

MONTREUX II